

CWP/CWL Series

High Precision 50-Hz KWh-meter Current Transformer

www.DataSheet4U.com

Features

- Negligible amplitude error due to low core losses.
- Reduced phase error due to simple electronic calibration.
- Improved stability of the permeability across the entire temperature range.
- Reduced core size or number of windings.
- Frequency 50/60 Hz.
- Operating temperature from -40°C to 85°C .



Product List

Part number for pins	Part number for lead wire	I_p (ARMS)	I_{pmax} (ARMS)	I_{DCmax} (ADC)	Phase error $\tan \Phi$ ($^{\circ}$)	Burden R_B (Ω)	Burden voltage V_B (V_{RMS})	Centre hole \varnothing (mm)
CWP-0061 B1	CWL-0061 C1	0.10 - 6	6	-	< 0.5	125.0	0.3	6/7
CWP-0062 B1 (*)	CWL-0062 C1 (*)	0.10 - 6	6	-	< 0.6	100.0	0.3	6/7
-	CWL-0201 A1	0.25 - 20	79	-	< 0.3	37.5	0.3	5
-	CWL-0202 A1	0.25 - 20	135	36	< 4	37.5	0.3	5
-	CWL-0601 A2	0.50 - 60	83	-	< 0.2	12.5	0.3	7
CWP-0600 B2	CWL-0602 A2	0.50 - 60	270	80	< 3.7	12.5	0.3	8.5/7
-	CWL-1001 A3	1 - 100	176	-	< 0.15	7.5	0.3	10
CWP-1000 B3	CWL-1002 A3	1 - 100	345	113	< 5	7.5	0.3	11.5/9.5

Notes:

$N_{sec} = 2500$ $*N_{sec} = 2000$

I_p primary-current range.

I_{pmax} max. permissible AC-primary current without saturation.

I_{DCmax} max. DC-current value without saturation for class 1-counter (IEC 1036).

$\tan \Phi$ max. phase error concerning of I_p .

R_B burden resistance for 0.3V signal voltage at I_{pmax} .

V_B burden voltage R_B during max I_p .

Linearity better than $< 0.3\%$ between 0.1A to I_p .

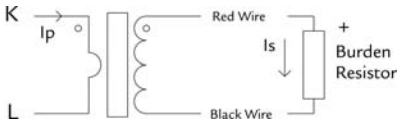
Amplitude error better than 1%.

Values in product list are referenced to 50 Hz measurements.

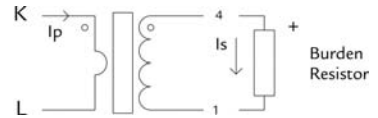
Dielectric strength 2500 Vac/50 Hz/1 min.

Contact us for further technical data.

Test Circuit and Electrical Schematic



FOR A AND C HOUSING



FOR B HOUSING

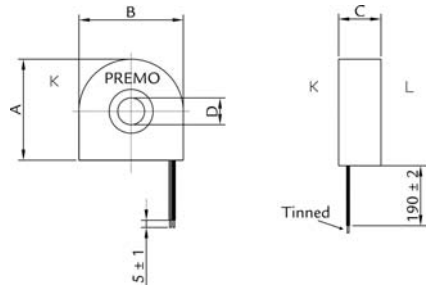
CWP/CWL Series

High Precision 50-Hz KWh-meter Current Transformer

www.DataSheet4U.com

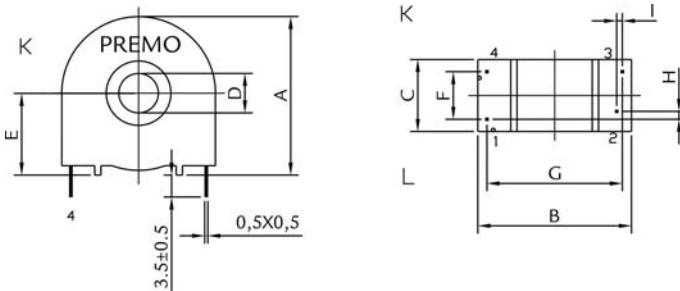
Dimensions for A housing

Type	A (MAX)	B (MAX)	C (MAX)	D (MIN)
A1	30.5	29.0	15	5.0
A2	31.5	31.5	15	8.0
A3	35.0	35.0	19	9.5



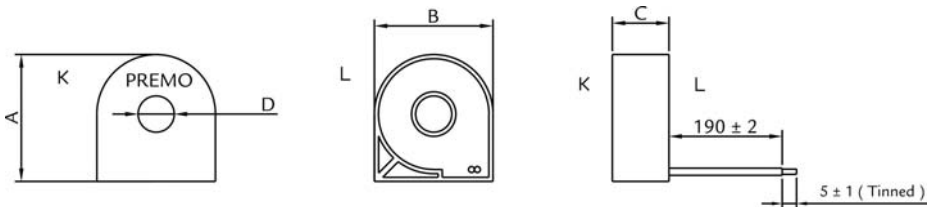
Dimensions for B housing

Type	A (MAX)	B (MAX)	C (MAX)	D (MIN)	E (±0.1)	F (±0.1)	G (±0.1)	H (±0.1)	I (±0.1)
B1	25.5	25.0	12.0	6.0	13.0	7.62	21.59	1.27	0.00
B2	31.5	32.0	15.0	8.0	16.0	10.00	25.50	2.54	2.54
B3	34.5	34.5	15.0	11.5	17.3	10.16	27.94	2.54	2.54



Dimensions for C housing

Type	A (MAX)	B (MAX)	C (MAX)	D (MIN)
C1	25.0	23.5	11.5	7.0



Tolerances ± 0.1 unless otherwise noted.
Dimensions in mm.